

Lightsource Test Report

Product Infomation

Product Category: LED STRIP
 Product Spec: ARCO 8
 Manufacturer: TECSOLELED S.L.

Product Type: LED STRIP
 Product Number: 315
 Buyer: TECSOLELED S.L.

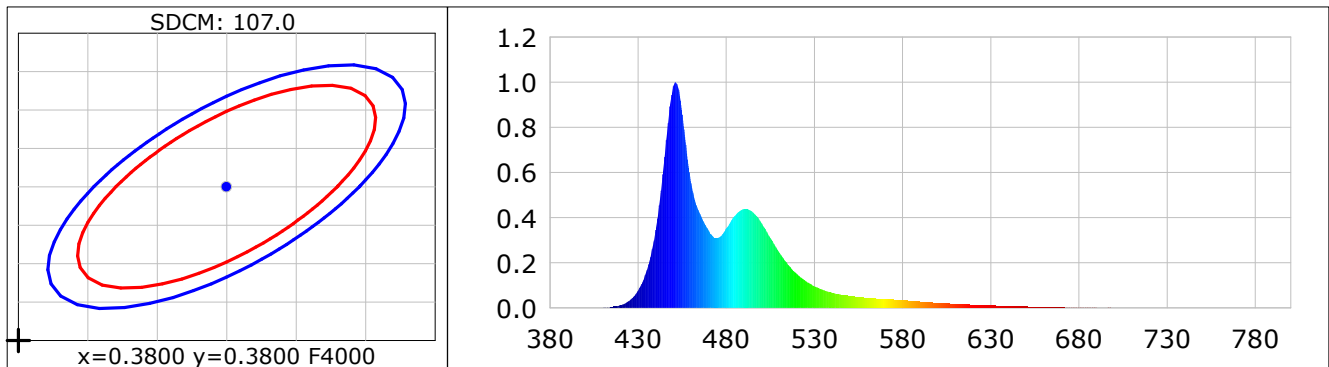
CIE Colorimetric Parameters

Chromaticity coordinates: $x=0.1555$ $y=0.1502$ $u(u')=0.1384$ $v=0.2006$ $v'=0.3010$
 CCT: $T_c=100000K$ ($duv=-0.07775$) Color Ratio: $R=0.027$ $G=0.658$ $B=0.314$
 Peak Wavelength: 451.2nm Half Bandwidth: 18.7nm
 Dominant Wavelength: 476.4nm Color Purity: 0.778
 CRI: $R_a=27.8$, $avgR(1\sim14)=9.5$, $avgR(1\sim15)=11.0$ TM30: $R_f=41$, $R_g=68$
 GAI: $GAI_BB_8=42.1$, $GAI_BB_15=48.5$, $GAI_EES=45.9$

R1 =28	R2 =54	R3 =0	R4 =3	R5 =41	R6 =40	R7 =40	R8 =16
R9 =-179	R10=-2	R11=-16	R12=36	R13=33	R14=39	R15=32	

Color Quality Scale: $Q_a=56.0$, $Q_f=58.4$, $Q_p=46.9$, $Q_g=63.2$

Q1 =73	Q2 =84	Q3 =68	Q4 =60	Q5 =65	Q6 =70	Q7 =73	Q8 =81
Q9 =48	Q10=54	Q11=41	Q12=44	Q13=44	Q14=28	Q15=51	



Photometric Parameters

Luminous Flux: 743.30 lm Efficiency: 57.34 lm/W Radiant Power: 4.873 W
 Total mains efficacy: 53.10 lm/W Energy Efficiency Class: G (EU 2019/2015)

Electric Parameters

Voltage: 24.000V Current: 0.5401A Power: 12.96W
 Power Factor: 1.0000 Frequency: 0.00Hz

Test Infomation

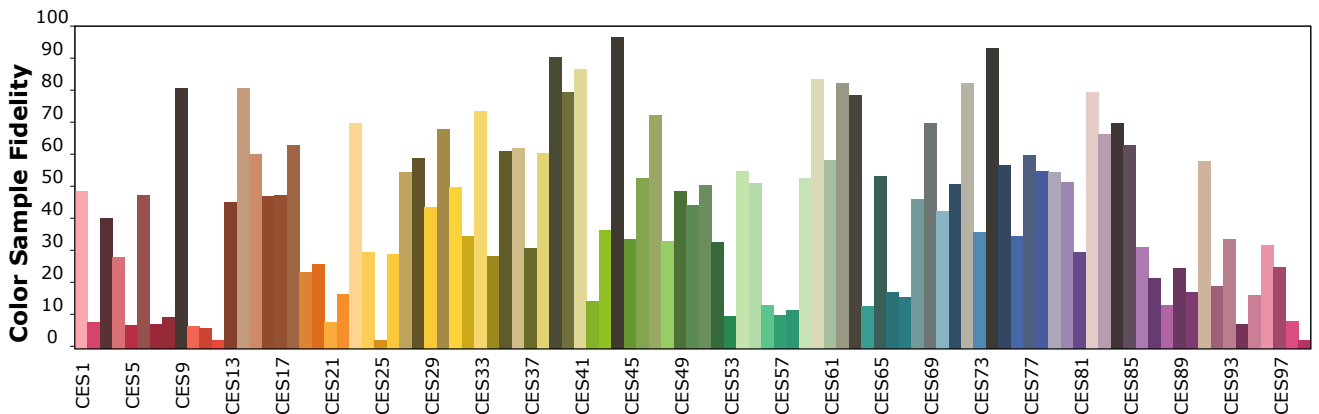
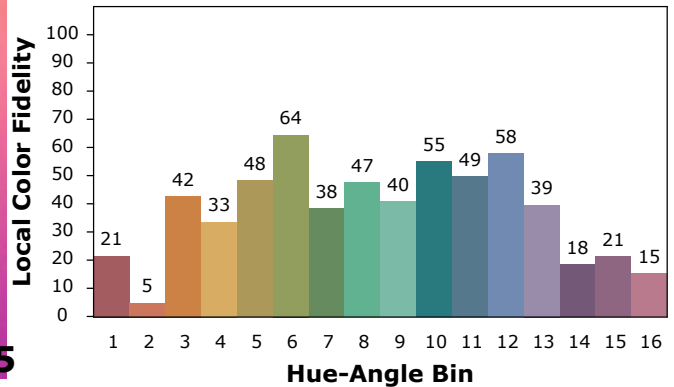
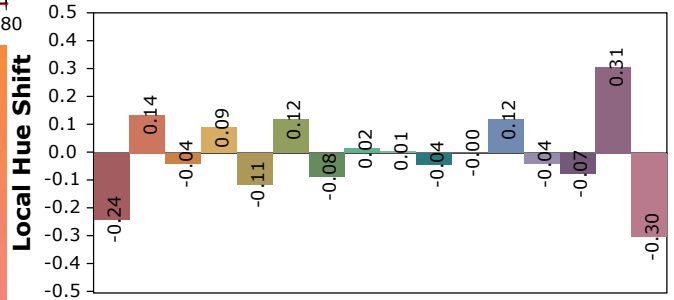
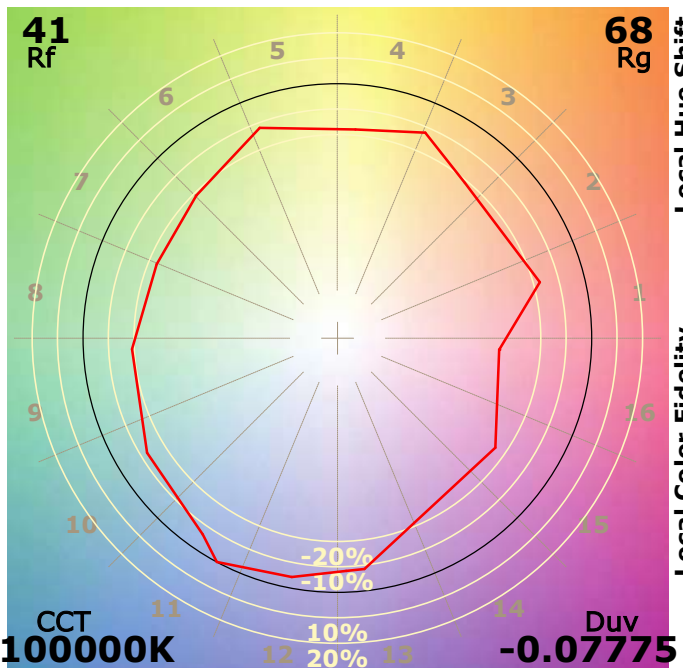
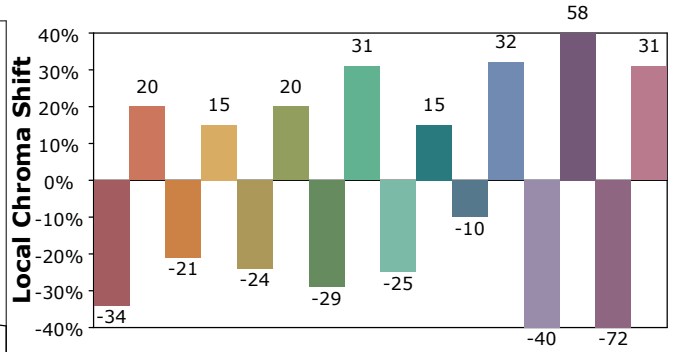
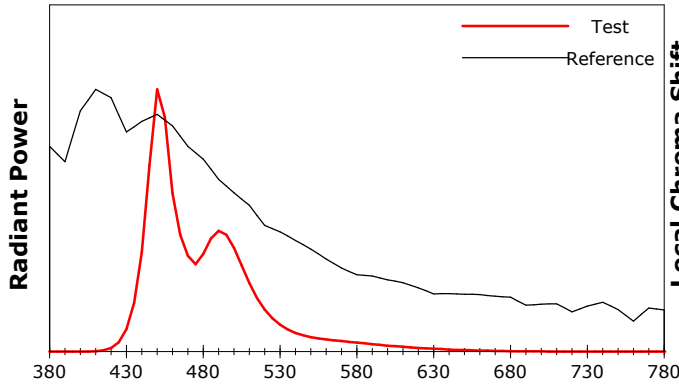
Scan Range: 380~800:1nm Photometric Method: sphere-spectroradiometer
 Stabilization Time: 0 Sec ALC.: 1.0000 Photometric Condition: Sphere diameter: 1.50m, 4PI
 Max of Signal: 46344 (2097) CCD Integration Time: 99.99 ms

IES TM-30-18 Color Rendition Report

Product Information

Product Category: LED STRIP
 Product Spec: 21059602440597
 Manufacturer: TECSOLED S.L.

Product Type: LED STRIP
 Product Number: 315
 Buyer: TECSOLED S.L.



Condition: Tx:20.3°C, Ti:18.8°C, R.H.:60%
 Test Lab: TECSOLED S.L.
 Operator: JORDAN GIL DIAZ

Test Device: Inventfine CMS-2S (Plus)
 Test Time: 2021-11-02 10:58:15
 Inspector: