

Lightsource Test Report

Product Infomation

Product Category: LED STRIP	Product Type: LED STRIP
Product Spec: ARCO 6	Product Number: 313
Manufacturer: TECSOLELED S.L.	Buyer: TECSOLELED S.L.

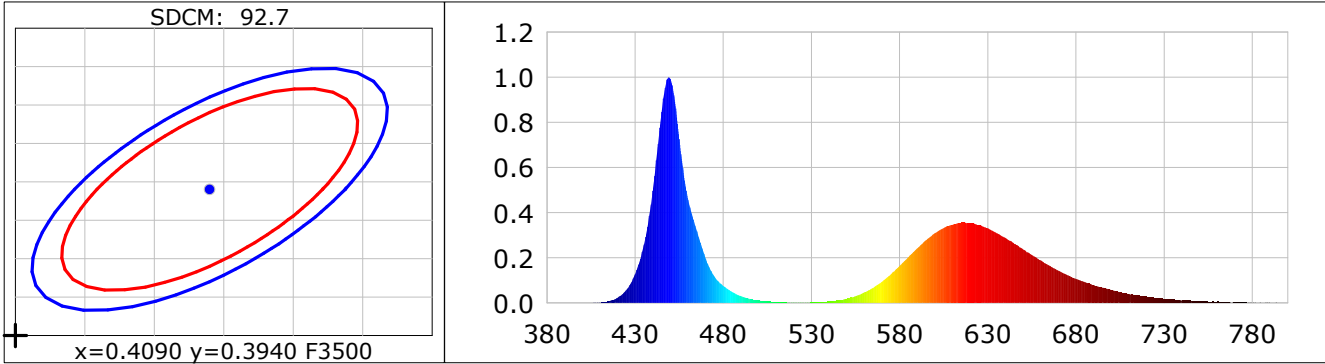
CIE Colorimetric Parameters

Chromaticity coordinates: $x=0.3391$ $y=0.1646$ $u(u')=0.3157$ $v=0.2298$ $v'=0.3447$
 CCT: $T_c=2016K$ ($duv=-0.12968$) Color Ratio: $R=0.461$ $G=0.451$ $B=0.088$
 Peak Wavelength: 449.1nm Half Bandwidth: 18.9nm
 Dominant Wavelength: 0.0nm Color Purity: 0.000
 CRI: $R_a= 4.0$, $avgR(1\sim14)=-14.3$, $avgR(1\sim15)= -8.5$ TM30: $R_f= 13$, $R_g= 114$
 GAI: $GAI_BB_8=370.9$, $GAI_BB_15=262.9$, $GAI_EES=93.4$

R1 =87	R2 =20	R3 =-59	R4 =-10	R5 =71	R6 =-50	R7 =-34	R8 =7
R9 =47	R10=-75	R11=-22	R12=-261	R13=61	R14=17	R15=73	

 Color Quality Scale: $Q_a= -1.\$$, $Q_f= -1.\$$, $Q_p= -1.\$$, $Q_g= -1.\$$

Q1 =62	Q2 =54	Q3 =0	Q4 =0	Q5 =5	Q6 =26	Q7 =45	Q8 =52
Q9 =83	Q10=0	Q11=0	Q12=0	Q13=0	Q14=10	Q15=55	



Photometric Parameters

Luminous Flux: 652.00 lm	Efficiency: 50.70 lm/W	Radiant Power: 4.084 W
Total mains efficacy: 46.94 lm/W	Energy Efficiency Class: G (EU 2019/2015)	

Electric Parameters

Voltage: 24.000V	Current: 0.5359A	Power: 12.86W
Power Factor: 1.0000	Frequency: 0.00Hz	

Test Infomation

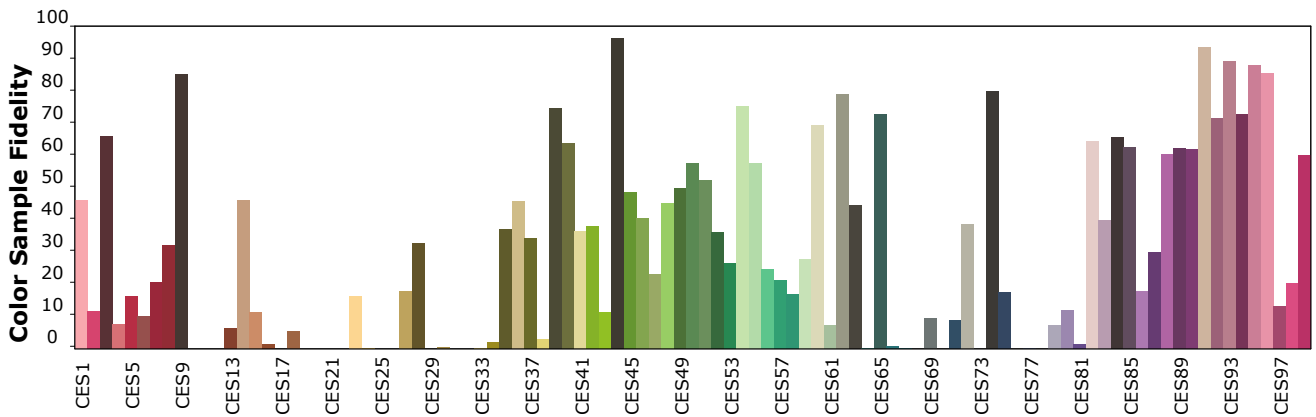
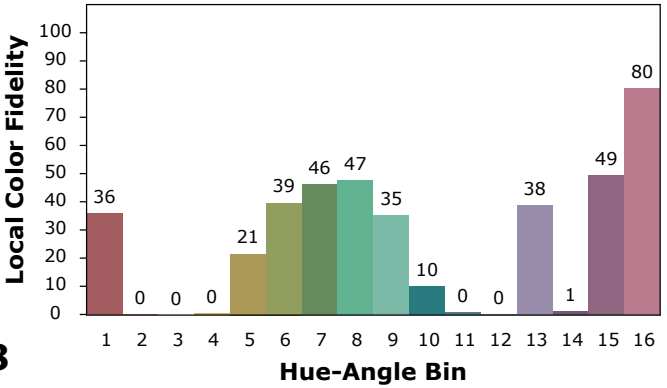
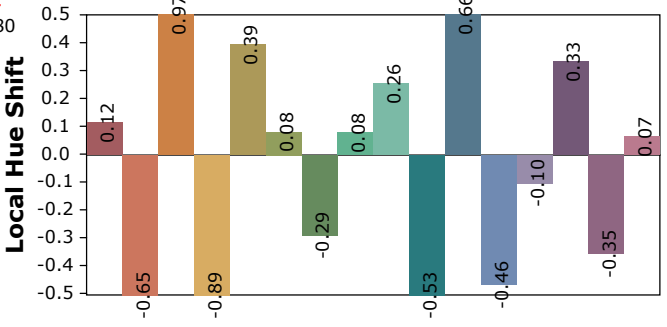
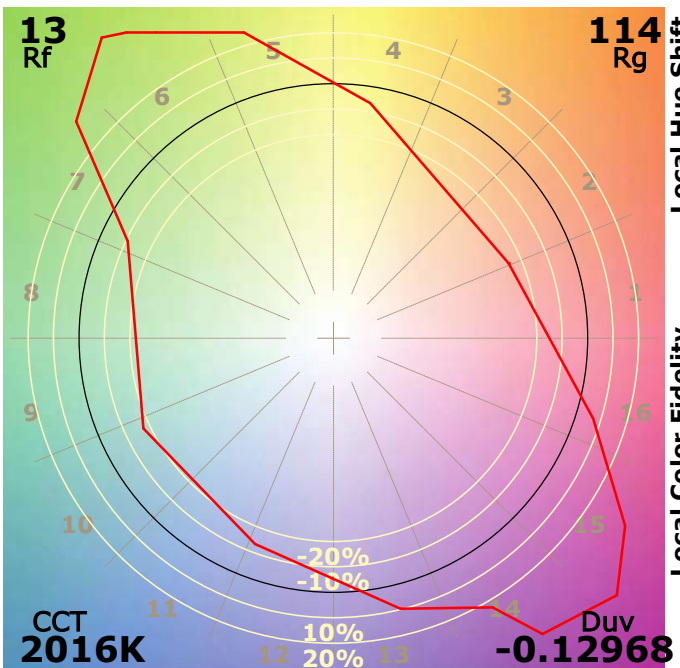
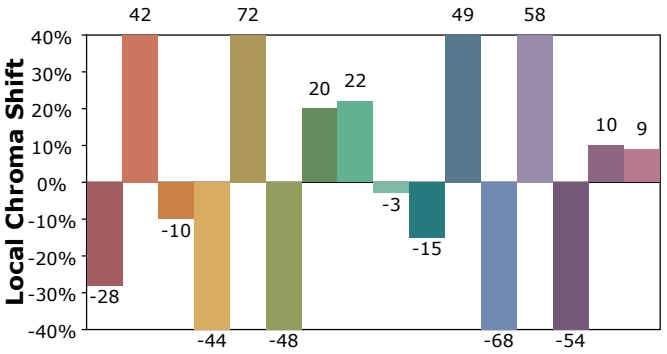
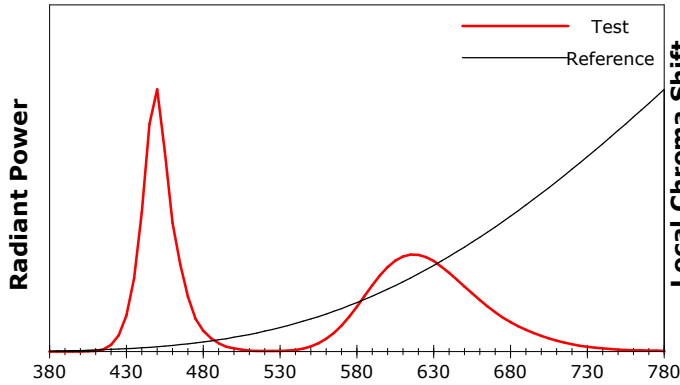
Scan Range: 380~800:1nm	Photometric Method: sphere-spectroradiometer
Stabilization Time: 0 Sec ALC.: 1.0000	Photometric Condition: Sphere diameter: 1.50m, 4PI
Max of Signal: 46900 (2107)	CCD Integration Time: 153.33 ms

IES TM-30-18 Color Rendition Report

Product Information

Product Category: LED STRIP
 Product Spec: 21059602440595
 Manufacturer: TECSOLED S.L.

Product Type: LED STRIP
 Product Number: 313
 Buyer: TECSOLED S.L.



Condition: Tx:20.2°C, Ti:18.8°C, R.H.:60%
 Test Lab: TECSOLED S.L.
 Operator: JORDAN GIL DIAZ

Test Device: Inventfine CMS-2S (Plus)
 Test Time: 2021-11-02 10:50:52
 Inspector: