

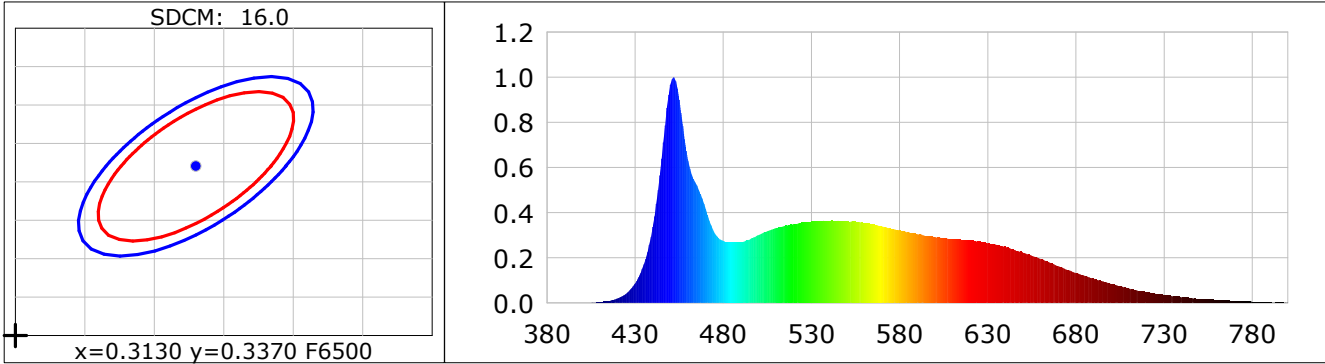
**Lightsource Test Report**

**Product Infomation**

|                               |                         |
|-------------------------------|-------------------------|
| Product Category: LED STRIP   | Product Type: LED STRIP |
| Product Spec: FOOD_6          | Product Number: 798     |
| Manufacturer: TECSOLELED S.L. | Buyer: TECSOLELED S.L.  |

**CIE Colorimetric Parameters**

Chromaticity coordinates:  $x=0.2976$   $y=0.3059$   $u(u')=0.1959$   $v=0.3021$   $v'=0.4531$   
 CCT:  $T_c=7794K$  ( $duv=-0.00080$ ) Color Ratio:  $R=0.143$   $G=0.785$   $B=0.072$   
 Peak Wavelength: 451.8nm Half Bandwidth: 23.2nm  
 Dominant Wavelength: 490.1nm Color Purity: 0.145  
 CRI:  $R_a=93.6$ ,  $avgR(1\sim14)=90.7$ ,  $avgR(1\sim15)=91.0$  TM30:  $R_f=88$ ,  $R_g=98$   
 GAI:  $GAI\_BB\_8=98.7$ ,  $GAI\_BB\_15=102.9$ ,  $GAI\_EES=100.4$   
 R1 =94 R2 =96 R3 =93 R4 =93 R5 =92 R6 =90 R7 =96 R8 =93  
 R9 =83 R10=89 R11=93 R12=63 R13=97 R14=96 R15=95  
 Color Quality Scale:  $Q_a=89.2$ ,  $Q_f=88.3$ ,  $Q_p=90.8$ ,  $Q_g=98.2$   
 Q1 =92 Q2 =99 Q3 =83 Q4 =77 Q5 =84 Q6 =88 Q7 =95 Q8 =96  
 Q9 =96 Q10=92 Q11=89 Q12=90 Q13=92 Q14=93 Q15=94



**Photometric Parameters**

Luminous Flux: 1311.8 lm Efficiency: 97.73 lm/W Radiant Power: 4.845 W  
 Total mains efficacy: 90.50 lm/W Energy Efficiency Class: F (EU 2019/2015)

**Electric Parameters**

Voltage: 24.000V Current: 0.5593A Power: 13.42W  
 Power Factor: 1.0000 Frequency: 0.00Hz

**Test Infomation**

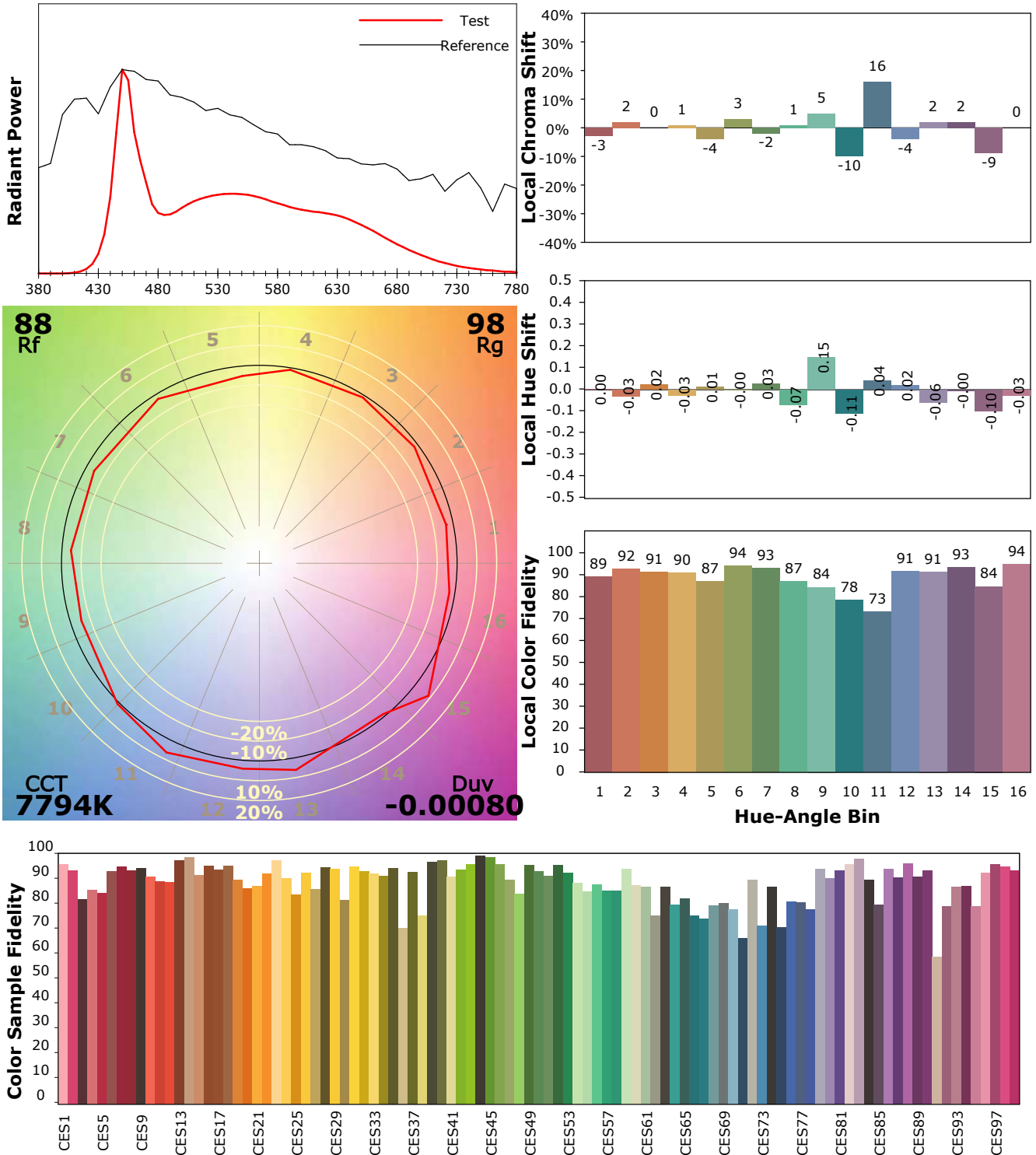
Scan Range: 380~800:1nm Photometric Method: sphere-spectroradiometer  
 Stabilization Time: 30 Sec ALC.: 1.0000 Photometric Condition: Sphere diameter: 1.50m, 4PI  
 Max of Signal: 46168 (2108) CCD Integration Time: 206.47 ms

## IES TM-30-18 Color Rendition Report

**Product Information**

Product Category: LED STRIP  
 Product Spec: FOOD\_6  
 Manufacturer: TECSOLED S.L.

Product Type: LED STRIP  
 Product Number: 798  
 Buyer: TECSOLED S.L.



Condition: Tx:20.1'C, Ti:18.5'C, R.H.:60%  
 Test Lab: TECSOLED S.L.  
 Operator: JORDAN GIL DIAZ

Test Device: Inventfine CMS-2S (Plus)  
 Test Time: 2022-03-31 15:58:37  
 Inspector: