

Lightsource Test Report

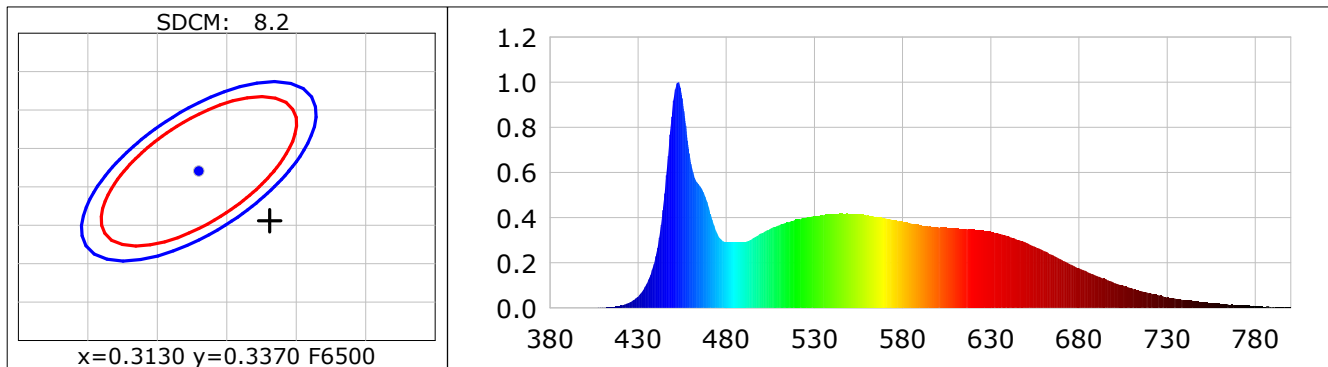
Product Infomation

Product Category: LED STRIP
 Product Spec: VUGA 1
 Manufacturer: TECSOLELED S.L.

Product Type: LED STRIP
 Product Number: 295
 Buyer: TECSOLELED S.L.

CIE Colorimetric Parameters

Chromaticity coordinates: $x=0.3181$ $y=0.3306$ $u(u')=0.2010$ $v=0.3133$ $v'=0.4699$
 CCT: $T_c=6210K$ ($duv=0.00130$) Color Ratio: $R=0.155$ $G=0.781$ $B=0.065$
 Peak Wavelength: 452.6nm Half Bandwidth: 22.8nm
 Dominant Wavelength: 489.4nm Color Purity: 0.053
 CRI: $R_a=93.7$, $avgR(1\sim14)=90.8$, $avgR(1\sim15)=91.0$ TM30: $R_f=89$, $R_g=97$
 GAI: $GAI_BB_8=97.8$, $GAI_BB_15=102.7$, $GAI_EES=94.1$
 R1 =94 R2 =97 R3 =95 R4 =92 R5 =92 R6 =92 R7 =95 R8 =91
 R9 =79 R10=91 R11=92 R12=65 R13=97 R14=98 R15=94
 Color Quality Scale: $Q_a=90.3$, $Q_f=89.9$, $Q_p=91.0$, $Q_g=97.6$
 Q1 =91 Q2 =99 Q3 =85 Q4 =80 Q5 =85 Q6 =89 Q7 =94 Q8 =96
 Q9 =97 Q10=94 Q11=92 Q12=93 Q13=94 Q14=93 Q15=93



Photometric Parameters

Luminous Flux: 1508.1 lm Efficiency: 156.83 lm/W Radiant Power: 5.385 W
 Total mains efficacy: 145.23 lm/W Energy Efficiency Class: D (EU 2019/2015)

Electric Parameters

Voltage: 24.000V Current: 0.4007A Power: 9.62W
 Power Factor: 1.0000 Frequency: 0.00Hz

Test Infomation

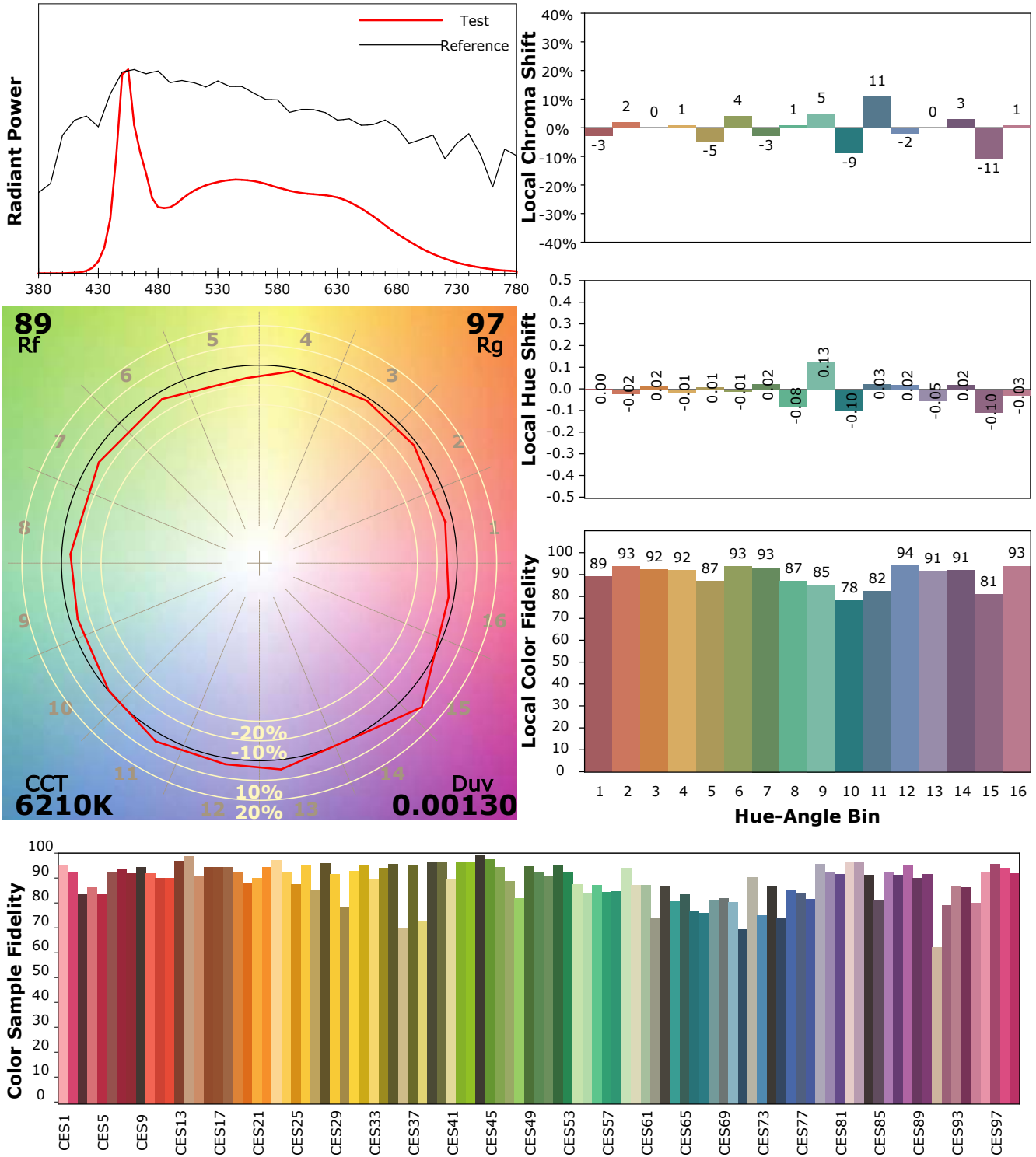
Scan Range: 380~800:1nm Photometric Method: sphere-spectroradiometer
 Stabilization Time: 0 Sec ALC.: 1.0000 Photometric Condition: Sphere diameter: 1.50m, 4PI
 Max of Signal: 50797 (2038) CCD Integration Time: 230.70 ms

IES TM-30-18 Color Rendition Report

Product Information

Product Category: LED STRIP
 Product Spec: 21059602440581
 Manufacturer: TECSOLED S.L.

Product Type: LED STRIP
 Product Number: 295
 Buyer: TECSOLED S.L.



Condition: Tx:18.3°C, Ti:17.9°C, R.H.:60%
 Test Lab: TECSOLED S.L.
 Operator: JORDAN GIL DIAZ

Test Device: Inventfine CMS-2S (Plus)
 Test Time: 2021-11-02 09:34:34
 Inspector: