

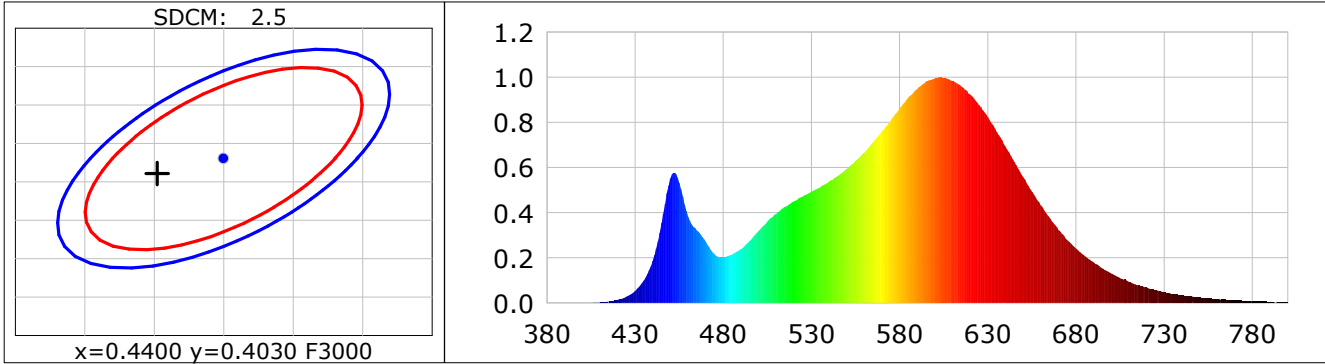
Lightsource Test Report

Product Infomation

Product Category: LED STRIP	Product Type: LED STRIP
Product Spec: ROWS 7	Product Number: 450
Manufacturer: TECSOLELED S.L.	Buyer: TECSOLELED S.L.

CIE Colorimetric Parameters

Chromaticity coordinates: $x=0.4352$ $y=0.4011$ $u(u')=0.2508$ $v=0.3466$ $v'=0.5199$
 CCT: $T_c=3005K$ ($duv=-0.00097$) Color Ratio: $R=0.230$ $G=0.743$ $B=0.027$
 Peak Wavelength: 602.2nm Half Bandwidth: 122.7nm
 Dominant Wavelength: 583.2nm Color Purity: 0.510
 CRI: $R_a=82.4$, $avgR(1\sim14)=77.2$, $avgR(1\sim15)=76.9$ TM30: $R_f=84$, $R_g=95$
 GAI: $GAI_BB_8=95.0$, $GAI_BB_15=102.7$, $GAI_EES=54.7$
 R1 =81 R2 =92 R3 =95 R4 =80 R5 =82 R6 =91 R7 =81 R8 =57
 R9 =5 R10=81 R11=80 R12=72 R13=84 R14=98 R15=73
 Color Quality Scale: $Q_a=82.2$, $Q_f=83.8$, $Q_p=83.5$, $Q_g=91.2$
 Q1 =78 Q2 =95 Q3 =83 Q4 =79 Q5 =83 Q6 =84 Q7 =84 Q8 =86
 Q9 =95 Q10=90 Q11=86 Q12=83 Q13=82 Q14=71 Q15=74



Photometric Parameters

Luminous Flux: 3606.1 lm Efficiency: 139.71 lm/W Radiant Power: 10.839 W
 Total mains efficacy: 129.37 lm/W Energy Efficiency Class: E (EU 2019/2015)

Electric Parameters

Voltage: 24.000V Current: 1.0755A Power: 25.81W
 Power Factor: 1.0000 Frequency: 0.00Hz

Test Infomation

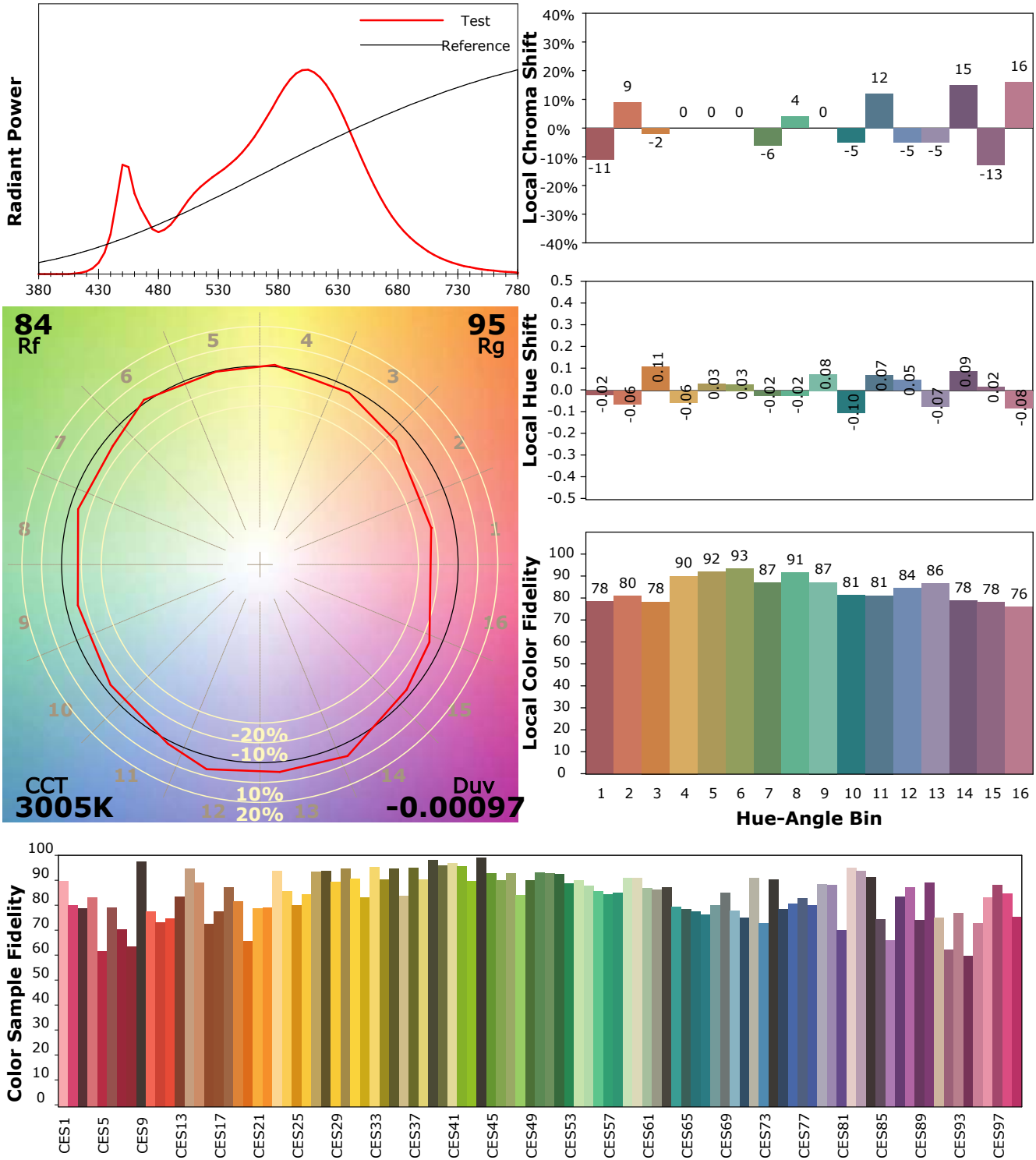
Scan Range: 380~800:1nm	Photometric Method: sphere-spectroradiometer
Stabilization Time: 30 Sec ALC.: 1.0000	Photometric Condition: Sphere diameter: 1.50m, 4PI
Max of Signal: 46734 (1980)	CCD Integration Time: 204.22 ms

IES TM-30-18 Color Rendition Report

Product Information

Product Category: LED STRIP
 Product Spec: ROWS 7
 Manufacturer: TECSOLELED S.L.

Product Type: LED STRIP
 Product Number: 450
 Buyer: TECSOLELED S.L.



Condition: Tx:17.3'C, Ti:16.5'C, R.H.:60%
 Test Lab: TECSOLELED S.L.
 Operator: JORDAN GIL DIAZ

Test Device: Inventfine CMS-2S (Plus)
 Test Time: 2021-11-10 09:27:19
 Inspector: