

## Lightsource Test Report

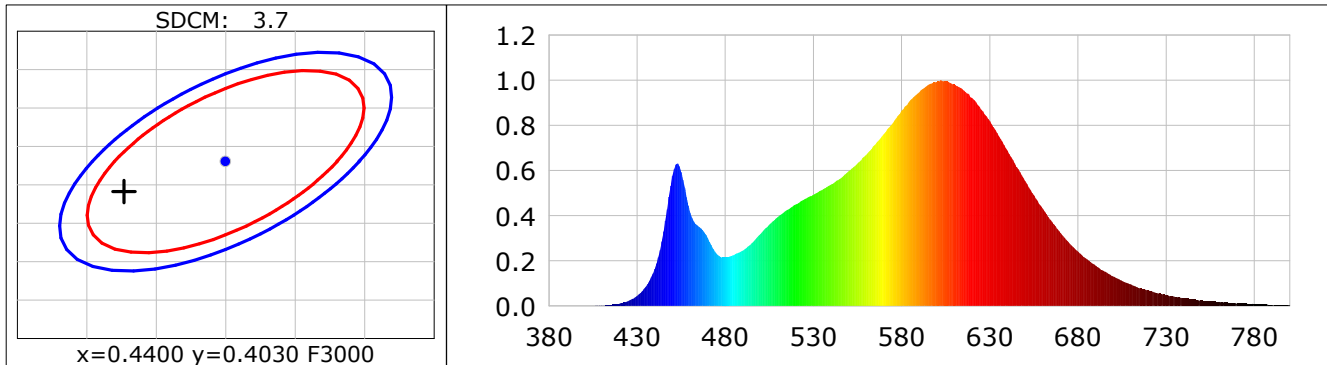
**Product Infomation**

Product Category: LED STRIP  
 Product Spec: KAUS 4  
 Manufacturer: TECSOLELED S.L.

Product Type: LED STRIP  
 Product Number: 423  
 Buyer: TECSOLELED S.L.

**CIE Colorimetric Parameters**

Chromaticity coordinates:  $x=0.4327$   $y=0.3991$   $u(u')=0.2500$   $v=0.3458$   $v'=0.5188$   
 CCT:  $T_c=3032K$  ( $duv=-0.00141$ ) Color Ratio:  $R=0.228$   $G=0.743$   $B=0.028$   
 Peak Wavelength: 602.2nm Half Bandwidth: 122.4nm  
 Dominant Wavelength: 583.2nm Color Purity: 0.497  
 CRI:  $R_a=82.4$ ,  $avgR(1\sim14)=77.2$ ,  $avgR(1\sim15)=77.0$  TM30:  $R_f=84$ ,  $R_g=95$   
 GAI:  $GAI\_BB\_8=95.8$ ,  $GAI\_BB\_15=103.8$ ,  $GAI\_EES=55.8$   
 R1 =81 R2 =92 R3 =95 R4 =80 R5 =82 R6 =91 R7 =80 R8 =58  
 R9 =6 R10=82 R11=79 R12=72 R13=84 R14=98 R15=74  
 Color Quality Scale:  $Q_a=82.1$ ,  $Q_f=83.6$ ,  $Q_p=83.4$ ,  $Q_g=91.2$   
 Q1 =78 Q2 =95 Q3 =83 Q4 =79 Q5 =82 Q6 =83 Q7 =83 Q8 =86  
 Q9 =95 Q10=90 Q11=86 Q12=83 Q13=82 Q14=72 Q15=74



**Photometric Parameters**

Luminous Flux: 2810.7 lm Efficiency: 169.59 lm/W Radiant Power: 8.468 W  
 Total mains efficacy: 157.04 lm/W Energy Efficiency Class: D (EU 2019/2015)

**Electric Parameters**

Voltage: 24.000V Current: 0.6906A Power: 16.57W  
 Power Factor: 1.0000 Frequency: 0.00Hz

**Test Infomation**

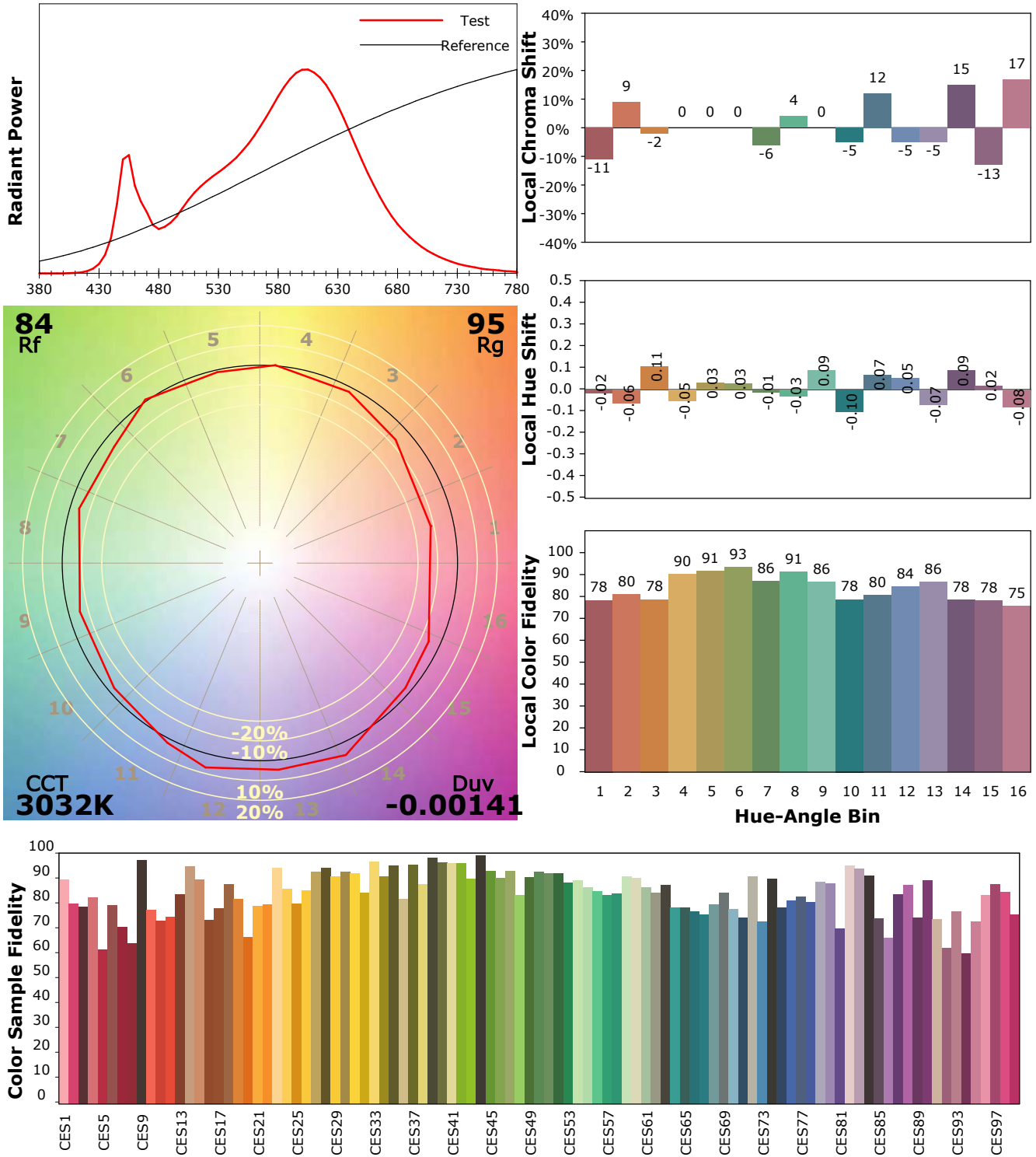
Scan Range: 380~800:1nm Photometric Method: sphere-spectroradiometer  
 Stabilization Time: 0 Sec ALC.: 1.0000 Photometric Condition: Sphere diameter: 1.50m, 4PI  
 Max of Signal: 44483 (2101) CCD Integration Time: 250.64 ms

## IES TM-30-18 Color Rendition Report

**Product Information**

Product Category: LED STRIP  
 Product Spec: KAUS 4  
 Manufacturer: TECSOLELED S.L.

Product Type: LED STRIP  
 Product Number: 423  
 Buyer: TECSOLELED S.L.



Condition: Tx:19.2°C, Ti:17.4°C, R.H.:60%  
 Test Lab: TECSOLELED S.L.  
 Operator: JORDAN GIL DIAZ

Test Device: Inventfine CMS-2S (Plus)  
 Test Time: 2021-11-09 13:06:02  
 Inspector: