

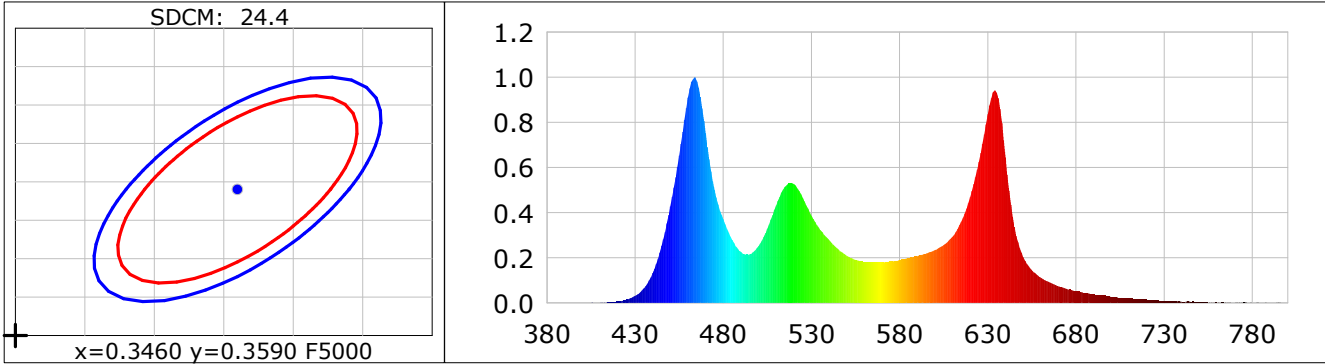
Lightsource Test Report

Product Infomation

Product Category: LED STRIP	Product Type: LED STRIP
Product Spec: GAMA 2	Product Number: 460
Manufacturer: TECSOLEED S.L.	Buyer: TECSOLEED S.L.

CIE Colorimetric Parameters

Chromaticity coordinates: $x=0.3170$ $y=0.2996$ $u(u')=0.2127$ $v=0.3016$ $v'=0.4523$
 CCT: $T_c=6490K$ ($duv=-0.01513$) Color Ratio: $R=0.240$ $G=0.676$ $B=0.084$
 Peak Wavelength: 463.8nm Half Bandwidth: 23.3nm
 Dominant Wavelength: 380.0nm Color Purity: 0.103
 CRI: $R_a=54.7$, $avgR(1\sim14)=40.5$, $avgR(1\sim15)=39.7$ TM30: $R_f=69$, $R_g=109$
 GAI: $GAI_BB_8=132.8$, $GAI_BB_15=128.3$, $GAI_EES=129.5$
 R1 =38 R2 =63 R3 =88 R4 =49 R5 =47 R6 =55 R7 =74 R8 =23
 R9 =-106 R10=20 R11=34 R12=49 R13=42 R14=90 R15=29
 Color Quality Scale: $Q_a=76.7$, $Q_f=66.2$, $Q_p=96.0$, $Q_g=121.1$
 Q1 =70 Q2 =86 Q3 =85 Q4 =78 Q5 =89 Q6 =95 Q7 =80 Q8 =77
 Q9 =85 Q10=75 Q11=63 Q12=65 Q13=75 Q14=80 Q15=71



Photometric Parameters

Luminous Flux: 987.87 lm	Efficiency: 61.34 lm/W	Radiant Power: 3.914 W
Total mains efficacy: 56.80 lm/W	Energy Efficiency Class: G (EU 2019/2015)	

Electric Parameters

Voltage: 24.000V	Current: 0.6710A	Power: 16.10W
Power Factor: 1.0000	Frequency: 0.00Hz	

Test Infomation

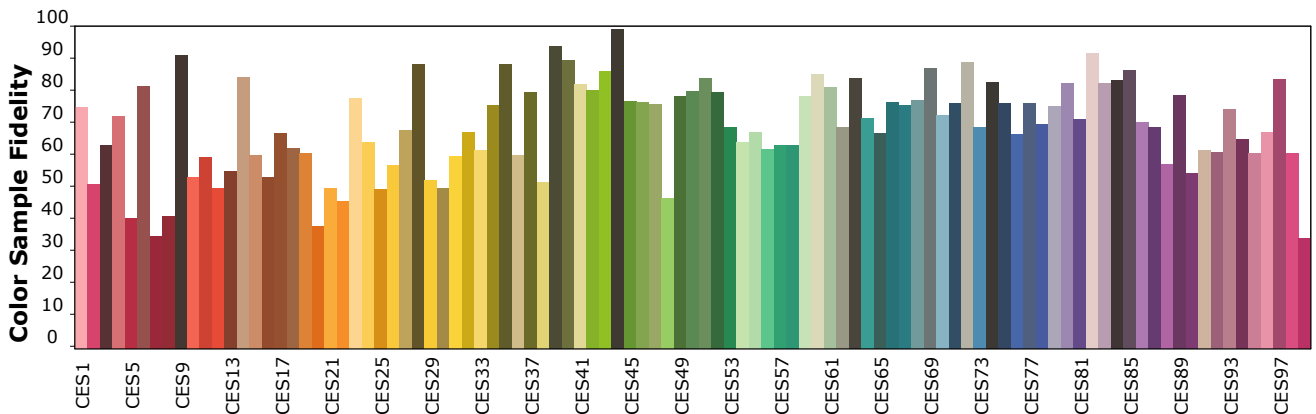
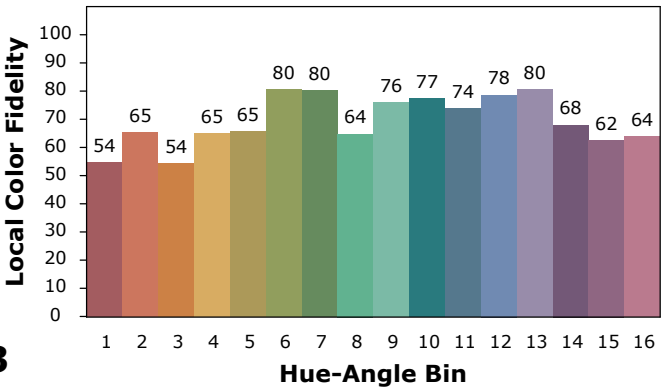
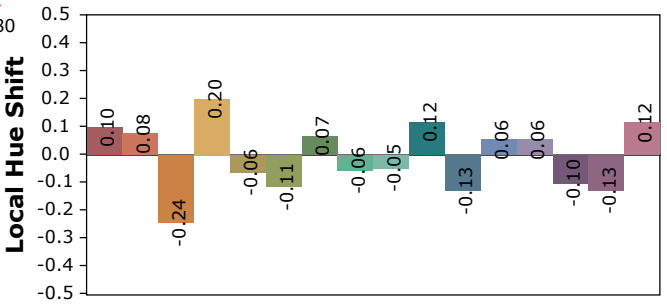
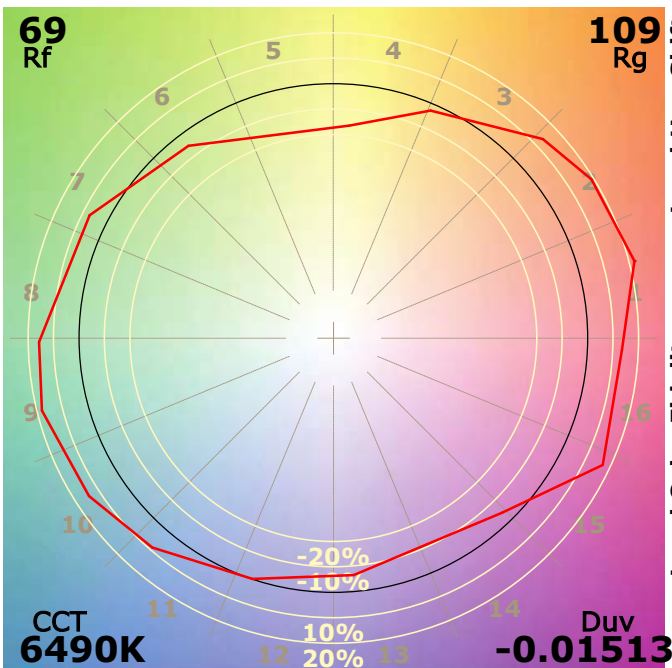
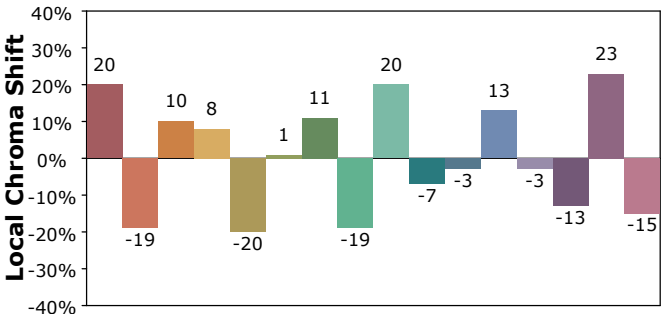
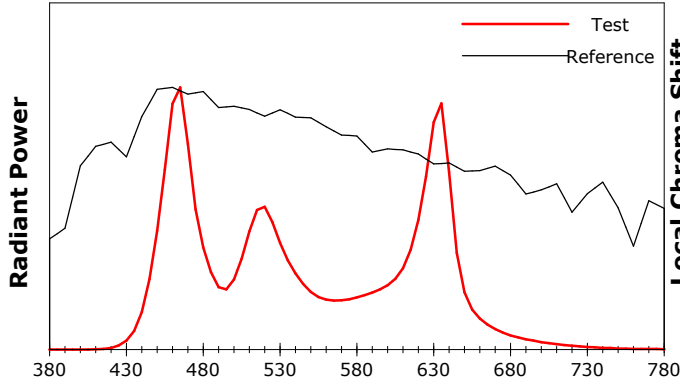
Scan Range: 380~800:1nm	Photometric Method: sphere-spectroradiometer
Stabilization Time: 30 Sec ALC.: 1.0000	Photometric Condition: Sphere diameter: 1.50m, 4PI
Max of Signal: 45011 (2079)	CCD Integration Time: 276.09 ms

IES TM-30-18 Color Rendition Report

Product Information

Product Category: LED STRIP
 Product Spec: GAMA 2
 Manufacturer: TECSOLED S.L.

Product Type: LED STRIP
 Product Number: 460
 Buyer: TECSOLED S.L.



Condition: Tx:18.7°C, Ti:16.8°C, R.H.:60%
 Test Lab: TECSOLED S.L.
 Operator: JORDAN GIL DIAZ

Test Device: Inventfine CMS-2S (Plus)
 Test Time: 2021-11-10 12:14:20
 Inspector: